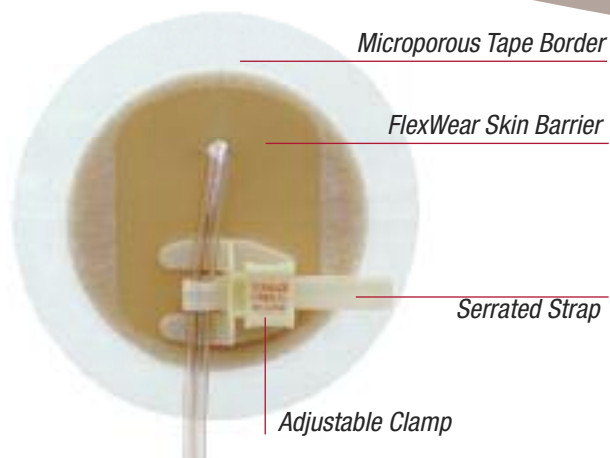


Horizontal Tube Attachment Device (HTAD)

Care Tips

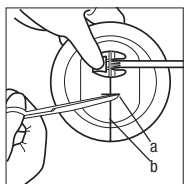


Horizontal Tube Attachment Device (HTAD) Stock No 9781

- Secures drain, tube, or catheter horizontal or parallel, to the skin at the tube exit site or at a point distal to the tube exit site
- May be left in place up to five days*
- Holds tubes 5 to 40 Fr
- Helps prevent tube migration
- Protects skin surrounding the exit site
- Serrated strap wraps around and secures the drain, tube, or catheter
- FlexWear adhesive barrier helps secure device to skin

Application

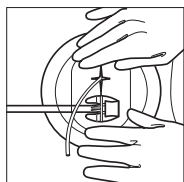
Clean and dry the skin where the product will be applied. Do not use any lotions or emollients as the residue will interfere with the adhesion of the barrier.



1. Using sterile technique (where applicable), cut a cross slit (a) in the barrier perpendicular to the starter slit (b). The larger the diameter of the drain/tube, the farther away from the drain/tube holder the cross slit should be made. If needed, trim the barrier for a closer fit around the tube.



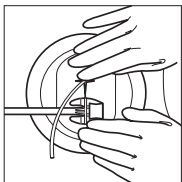
2. Peel the release paper from the skin barrier on the underside of the attachment device. DO NOT REMOVE THE RELEASE PAPER FROM THE TAPE BORDER.



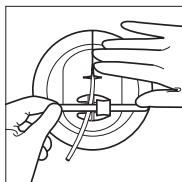
3. Feed the drain/tube through the starter slit to cross the slit. Position the device so that the drain/tube holder is below the tube exit site.



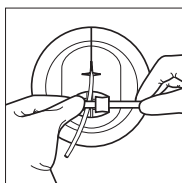
Attention to Detail. Attention to Life.



4. Press the barrier to the skin firmly, but gently, and smooth it to remove all wrinkles to ensure complete adhesion. Remove the release paper from the tape border and press tape to skin.



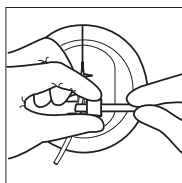
5. Place the drain/tube on the top of the serrated strap, making sure the drain/tube is not kinked. Bring the strap over the tube and push it into the strap insertion hole in the drain/tube holder.



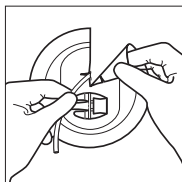
6. Pull the strap while pushing it from the other side until it fits snugly around the drain/tube. Be careful not to dislodge the attachment device during this step. The strap should squeeze the drain/tube slightly for maximum security.

CAUTION: DO NOT PULL THE STRAP TOO TIGHTLY AS THE PRESSURE MAY CAUSE OCCLUSION IN THE DRAIN/TUBE WHEN USING THE HORIZONTAL DRAIN/TUBE ATTACHMENT DEVICE. BE SURE TO FOLLOW CURRENT STANDARD CLINICAL PROCEDURE FOR THE PLACEMENT, MONITORING, AND REMOVAL OF PERCUTANEOUS TUBES.

Removal



7. Release the drain/tube from the tube holder by pushing the serrated strap backwards while squeezing the sides of the latch. Pull the strap all the way back through the sides of the latch.



8. Pull the strap all the way back through the latch.

Starting at the cross slit opening, gently peel the barrier and tape from around the drain/tube and from the patient's skin. Hold the tube with one hand and remove the attachment device.

To view an instructional video for this product, please visit www.hollister.com.

CAUTION: Prior to using the Horizontal Tube Attachment Device (HTAD), be sure to read the entire product Instructions for Use that accompany the product.



Hollister Incorporated
2000 Hollister Drive
Libertyville, Illinois 60048 USA
1.888.740.8999

Distributed in Canada by
Hollister Limited
95 Mary Street
Aurora, Ontario L4G 1G3
1.800.263.7400

* Data on file at Hollister Incorporated.